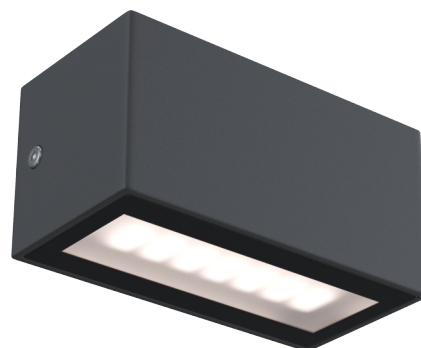


## view



RAL



4 ROCKUS SINGLE / TWIN M

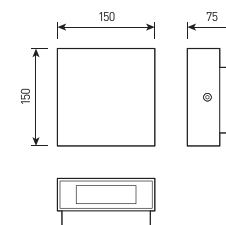
3 ROCKUS SINGLE / TWIN S

2 ROCKUS QUADRO SINGLE / TWIN M

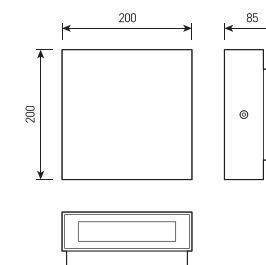
1 ROCKUS QUADRO SINGLE / TWIN S

## size

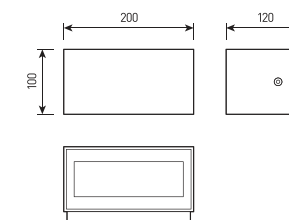
1



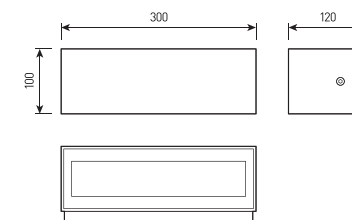
2



3



4



# ROCKUS

Wall mounted LED luminaire for architectural lighting

<b>Housing:</b>	Pressure die-cast aluminum alloy with polyester powder paint.
<b>Housing color:</b>	Grey, RAL
<b>Beam angle:</b>	97x99°, 100x100°, 87x75°, 93x75°
<b>IES protection classes:</b>	Class I (SELV)
<b>Color temperature, K:</b>	2700K, 3000K, 4000K, 5000K, 6000K
<b>Input voltage, V:</b>	220V
<b>Control system:</b>	On/Off
<b>Ingress Protection Rating, IP:</b>	IP65
<b>Operating temperature:</b>	-40°C ~ +50°C
<b>Weight:</b>	1,5-3,3kg

Article	Name	Power, W	Dimensions, mm	Input voltage, V	Beam angle, degrees	Color temperature, K	Weight, kg
644017136	ROCKUS SINGLE S 1x7,5W 220V IP65	7,5W	200x100x120	220V	97x99°	2700K, 3000K, 4000K, 5000K, 6000K	1.5
644017138	ROCKUS TWIN S 2x7,5W 220V IP65	15W	200x100x120	220V	97x99°	2700K, 3000K, 4000K, 5000K, 6000K	1.7
644017140	ROCKUS SINGLE M 1x12W 220V IP65	12W	300x100x120	220V	100x100°	2700K, 3000K, 4000K, 5000K, 6000K	2.2
644017142	ROCKUS TWIN M 2x12W 220V IP65	24W	300x100x120	220V	100x100°	2700K, 3000K, 4000K, 5000K, 6000K	2.5
644017144	ROCKUS QUADRO SINGLE S 1x6W 220V IP65	6W	150x150x75	220V	87x75°	2700K, 3000K, 4000K, 5000K, 6000K	1.7
644017146	ROCKUS QUADRO TWIN S 2x6W 220V IP65	12W	150x150x75	220V	87x75°	2700K, 3000K, 4000K, 5000K, 6000K	2.0
644017148	ROCKUS QUADRO SINGLE M 1x10W 220V IP65	10W	200x200x85	220V	93x75	2700K, 3000K, 4000K, 5000K, 6000K	3.0
644017150	ROCKUS QUADRO TWIN M 2x10W 220V IP65	20W	200x200x85	220V	93x75	2700K, 3000K, 4000K, 5000K, 6000K	3.3